



**CROATIAN ARMED FORCES**  
**HEADQUARTER OF THE CROATIAN NAVY**

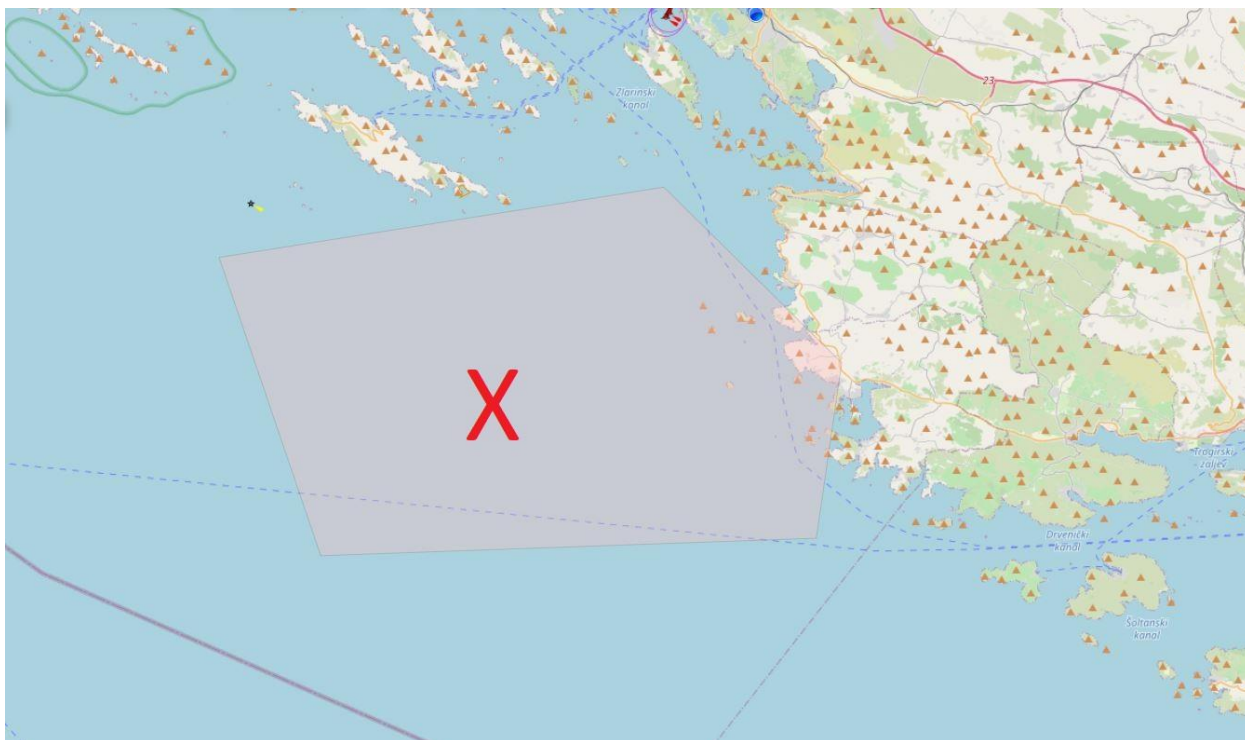


**WARNING**

**MILITARY ACITIVITIES, SUCH AS FIRINIG ARTILERY LIVE AMMOUNTION, WILL BE CONDUCTED IN THE RESTRICTED AREA OF THE ŽIRJE MIL. POLYGON:**

1) $\varphi = 43^{\circ} 38' 00''$ N	$\lambda = 015^{\circ} 50' 43''$ E
2) $\varphi = 43^{\circ} 33' 00''$ N	$\lambda = 015^{\circ} 57' 43''$ E
3) $\varphi = 43^{\circ} 28' 00''$ N	$\lambda = 015^{\circ} 56' 43''$ E
4) $\varphi = 43^{\circ} 27' 30''$ N	$\lambda = 015^{\circ} 37' 13''$ E
5) $\varphi = 43^{\circ} 36' 00''$ N	$\lambda = 015^{\circ} 33' 13''$ E
6) $\varphi = 43^{\circ} 38' 00''$ N	$\lambda = 015^{\circ} 50' 43''$ E

- **ON 15<sup>th</sup>, 17<sup>th</sup> AND 18<sup>th</sup> SEPTEMBER 2025. FROM 0700 UNTIL 1300 (0500 UNTIL 1100 UTC)**
- **ON 16<sup>th</sup> SEPTEMBER 2025. FROM 0700 UNTIL 1800 (0500 UNTIL 1600 UTC)**



**DURING MENTIONED PERIOD: NAVIGATION, FISHING AND ANCHORING ARE PROHIBITED IN RESTRICTED AREA.**